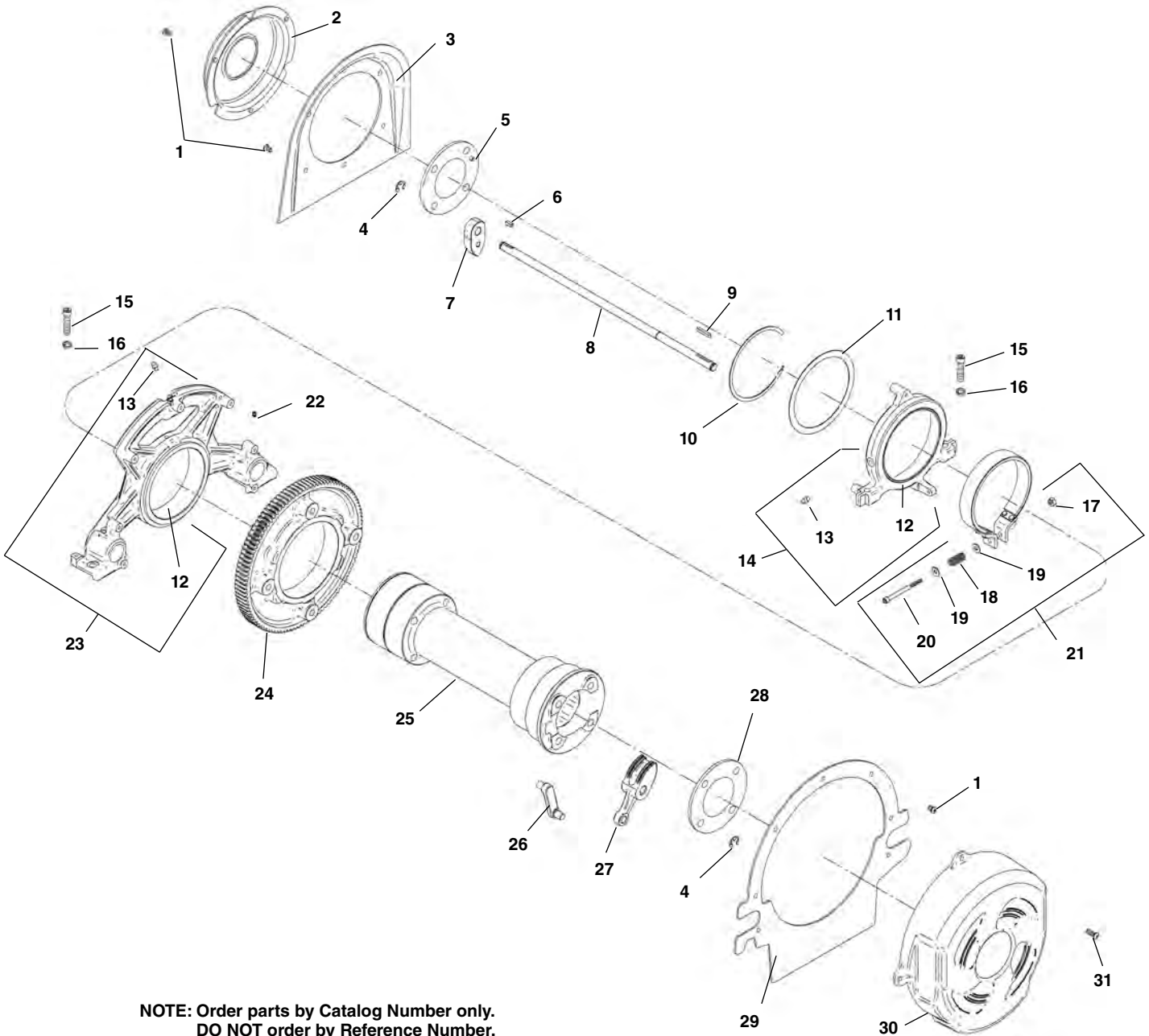
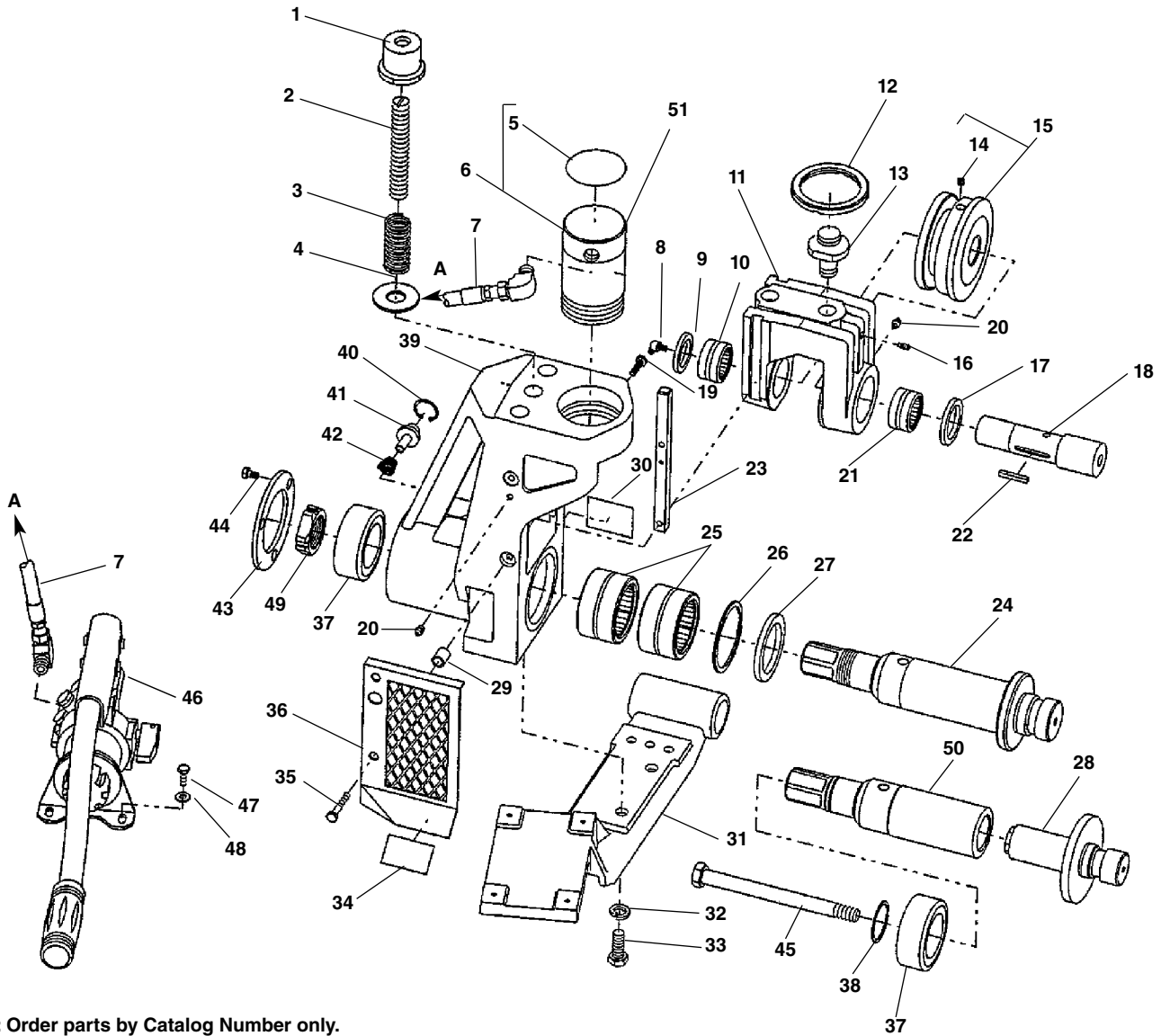


Drive Shaft Assembly



NOTE: Order parts by Catalog Number only.
DO NOT order by Reference Number.

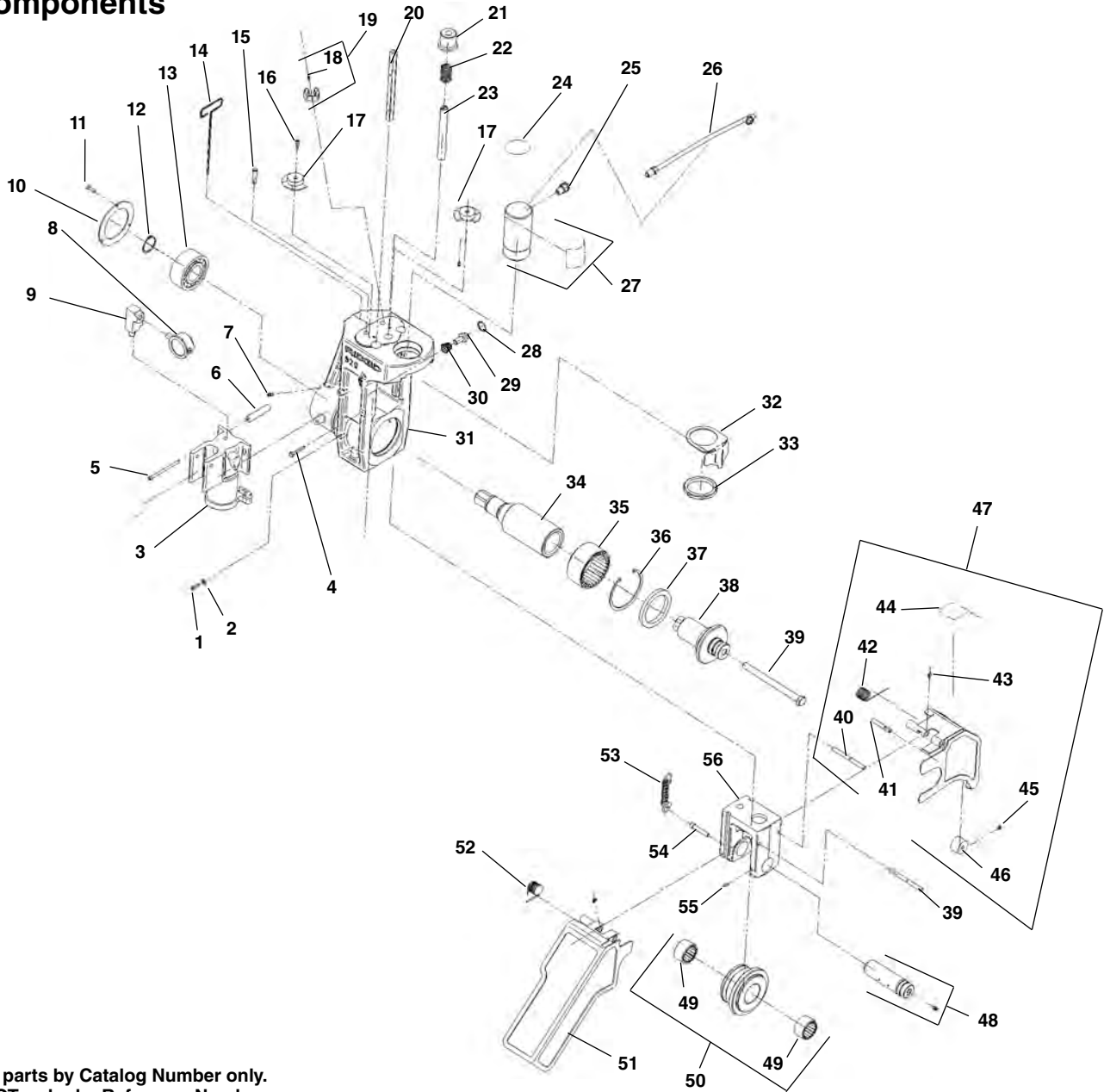
Ref. No.	Catalog No.	Description	Ref. No.	Catalog No.	Description
1	94337	Screw, Button Head 1/4" - 20 x 3/8" (7)	17	77710	Lock Nut 1/4" - 20
2	94082	Rear Cover	18	45895	Spring
3	94077	Rear Plate	19	27402	Washer, Flat 1/4" (2)
4	26937	Retaining Ring (8)	20	94327	Screw, Socket Head 1/4" - 20 x 2 1/2"
5	94022	Rear Pivot Rod Support	21	94002	Brake Assembly
6	94267	Key, 3/16" Square x 1/2" (4)	22	40910	Set Screw 1/4" - 20 x 3/4" (4)
7	93987	Rear Jaw (4)	23	94027	Front Bracket Assembly
8	93977	Pivot Rod (4)	24	94087	Drive Gear
9	94197	Key, 3/16" Square x 1 3/16" (4)	25	94032	Drive Shaft
10	94397	Retaining Ring	26	94047	Connecting Link (4)
11	94392	Thrust Washer	27	94017	Front Jaw (4)
12	93957	Spindle Bearing (2)	28	93992	Front Pivot Rod Support
13	46860	Grease Fitting (2)	29	94072	Front Plate
14	94037	Rear Bracket Assembly	30	94097	Front Cover
15	46745	Screw, 3/8" - 16 x 1 1/4" (4)	31	94332	Screw, Button Head 1/4" - 20 x 3/4" (9)
16	40930	Washer, Lock 3/8" (4)			



NOTE: Order parts by Catalog Number only. DO NOT order by Reference Number.

Ref. No.	Catalog No.	Description	Ref. No.	Catalog No.	Description	Ref. No.	Catalog No.	Description
1	49117	Depth Adjustment Nut	22	27002	Key, 3/16 Sq. x 1 1/16	36	49197	Guard (Incls. Ref. 29)
2	49112	Depth Rod	23	49107	Set of 2 Slide Keys	37	49127	Bearing
3	49122	Spring	24	51427	Drive Shaft, 2-6" Sch. 10 & 40	38	49192	Spiral Retaining Ring
4	60995	Flat Washer, 3/4"	24	51432	Drive Shaft Assy. - same as above and includes Ref. 37, 49	39	49057	Lower Roll Housing (Incls. Ref. 20)
5	49262	Label, Depth Adjustment		51817	Drive Shaft, 8-12" Sch 10, 8" Sch 40	40	49177	Retaining Ring
6	49147	Hydraulic Cylinder		51812	Drive Shaft Assy. - same as above and includes Ref. 37, 49	41	49172	Lock Pin
7	49142	Hydraulic Hose	25	87600	Roller Bearing (2)	42	44915	Spring
8	46915	Grease Fitting - 65 Deg.	26	49187	Spiral Retaining Ring	43	49132	Retaining Plate
9	87695	Seal	27	91000	Seal	44	60265	Hex Screw, 1/4" - 20 x 1/2" (3)
10	87710	Roller Bearing	28	49157	Drive Roll, 1"	45	49667	Hex Bolt 3/8" - 11 x 7"
11	49062	Upper Roll Housing (Incls. Ref. 9, 10, 16, 17, 20, 21)	29	49202	Set of 2 Spacers	46	61132	Hydraulic Pump
12	49152	Lock Ring	30	49207	Label, Warning	47	60005	Hex Screw, 1/4" - 20 x 3/4" (4)
13	49082	Piston Rod Coupling	31	48292	Mounting Base Kit - 300	48	27402	Flat Washer (4)
14	45192	Set Screw, 1/4" - 20 x 3/8"		48392	Mounting Base Kit - 1822	49	49607	Bearing Retaining Nut
15	49162	Groove Roll, 1"		48397	Mounting Base Kit - 1224	50	49067	Drive Shaft - for 1", 1 1/4", 1 1/2" rolls and copper roll 2" - 6"
	49097	Groove Roll, 1 1/4" - 1 1/2"		48402	Mounting Base Kit - 535		49627	Drive Shaft Assy. - same as above and includes Ref. 37, 38, 45
	49217	Groove Roll 2" - 6" SC 10/40		60212	Mounting Base Kit - 1233/300 Compact	51	35943	Repair Kit
	51822	Groove Roll, 8" - 12" Sch. 10, 8" Sch. 40				Following Items Not Shown:		
	50127	Groove Roll, Copper 2" - 6"	33	45500	Hex Screw, 1/2" x 1 1/4" (2)	49087		T-Handle Hex Key, 1/8"
16	51723	Set Screw, 1/4" - 20 x 1/2"	32	86445	Lock Washer, 1/2" (2)	49167		Coupling - 535/1822/1224
17	87690	Seal	34	49257	Label, Warning	53987		Roll Storage Case
18	49102	Upper Roll Shaft (Incls. Ref. 8, 22)	35	49212	Hex Screw, 1/4" - 20 x 1 3/4" (2)	54317		Box Wrench
19	49252	Hex Screw, 1/4" - 20 x 1" (2)						
20	46860	Grease Fitting (4)						
21	87610	Roller Bearing						

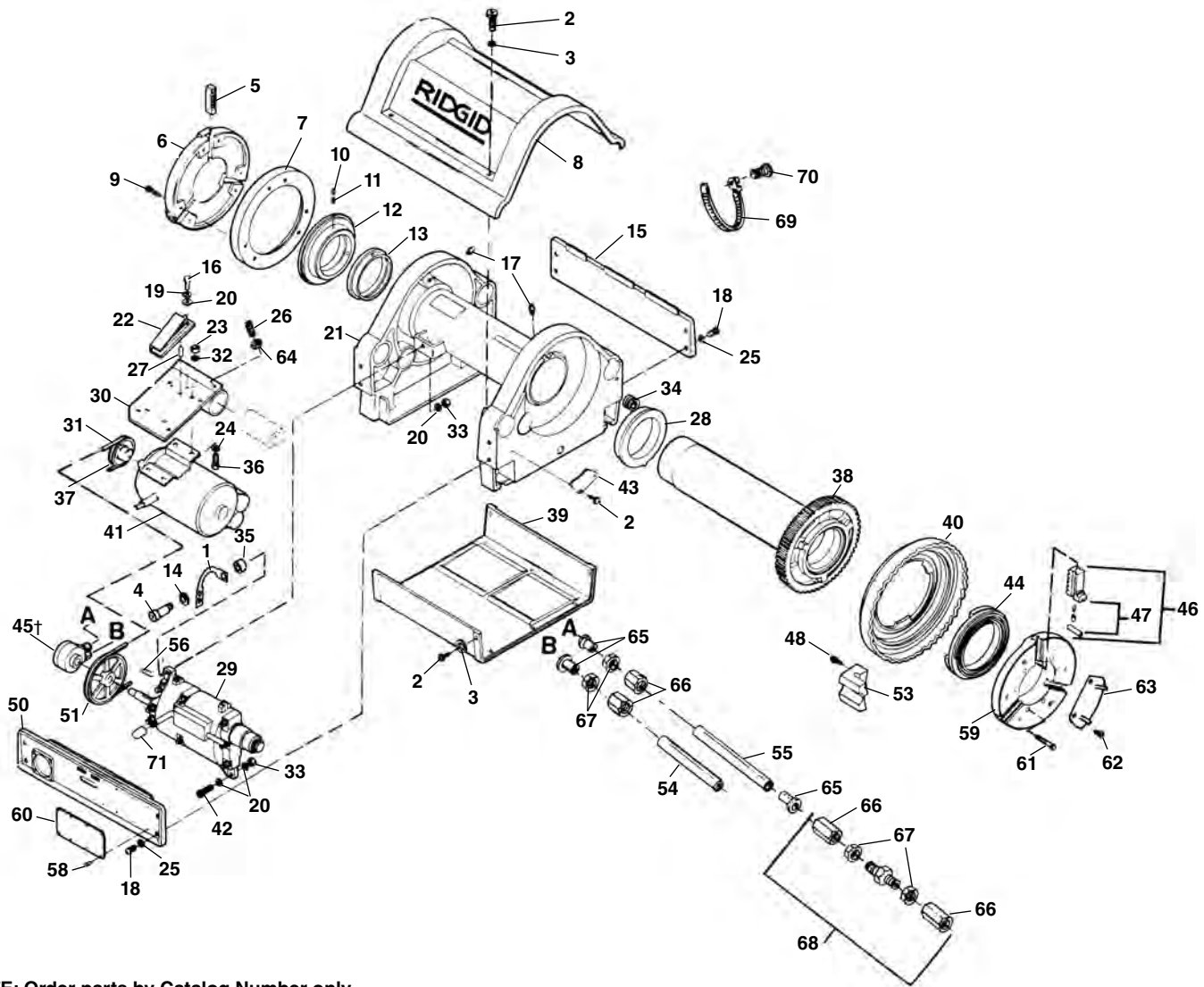
Main Components



NOTE: Order parts by Catalog Number only. DO NOT order by Reference Number.

Ref. No.	Catalog No.	Description	Ref. No.	Catalog No.	Description	Ref. No.	Catalog No.	Description
1	40910	1/4" - 20 x 3/4" Cap Screw (3)	21	49117	Depth Adj. Nut	40	11158	Pivot Shaft (2)
2	27402	1/4" Flat Washer (4)	22	49122	Compression Spring	41	11223	Shaft Roller
3	11173	Hand Pump	23	11123	Depth Adj. Rod	42	11153	Torsion Spring RH
4	64877	1/4" - 20 x 1 3/4" Screw (4)	24	49262	Depth Setting Decal	43	61042	Ret. Ring (3)
5	11203	1/4" - 20 x 5 1/2" Screw	25	11213	3/8" Swivel Connector	44	13198	Warning Decal Guard
6	11198	Pump Standoff	26	11208	Hydraulic Hose	45	61042	Ret. Ring (3)
7	46860	Grease Fitting (4)	27	11818	Cylinder (Inc. Decals)	46	11218	Guard Roller
8	11058	Pressure Gauge	28	49177	Retaining Ring	47	11143	Right Guard
9	11093	Hydraulic Tee	29	11118	Stop Pin	48	11078	Roller Shaft
10	11128	Bearing Retaining Plate	30	11168	Stop Pin Spring	49	11108	Needle Bearing (6)
11	60265	1/4" - 20 x 1/2" Screw (3)	31	11003	920 Main Housing	50	11018	2" - 6" Upper Groove Roll
12	11088	Retaining Ring	32	11248	Actuator	11028	11028	8" - 12" Upper Groove Roll
13	11163	Angular Contact Bearing	33	49152	Lock Ring	11038	11038	14" - 16" Upper Groove Roll
14	49087	1/8" Tee Handle Hex Wrench	34	11073	Drive Shaft	51	11138	Left Guard
15	11233	Clevis Pin	35	11063	Roller Bearing (2)	52	11148	Torsion Spring LH
16	87947	Shoulder Screw	36	11083	Internal Ret. Ring	53	11238	Return Spring
17	11048	Depth Adj. Gauge LT	37	11133	Grease Seal	54	46745	3/8" - 16 x 1 1/4" Screw (2)
18	54307	Drive Screw	38	11013	2" - 6" Drive Roll	55	34892	Set Screw 1/4" - 20
19	11263	Spring Clip (Inc. Ref. 18)	11023	8" - 12" Drive Roll	56	11008	Upper Roll Housing	
20	11068	Key Slide (2)	11033	14" - 16" Drive Roll				
			39	11113	5/8" - 11 x 7 3/4" HX HD Bolt			

Main Drive Components



**NOTE: Order parts by Catalog Number only.
DO NOT order by Reference Number.**

Ref. No.	Catalog No.	Description	Ref. No.	Catalog No.	Description	Ref. No.	Catalog No.	Description
1	33622	Pump Bracket	25	40930	Lock Washer 3/8" (8)	46	40087	Chuck Jaw Set
2	41597	Screw (12)	26	88265	Set Screw 3/8" - 16 x 1"	47	47517	Chuck Jaw Set Pl. Ctd. Pipe
3	41592	Washer (10)	27	88230	Roll Pin 1/4" x 9/16"	47	54212	Jaw Insert Set
4	33627	Screw	28	26767	Front Bearing	26247	26247	Jaw Insert Set F/Coated Pipe
5	32412	Centering Jaw Set	29	26362	Gear Box Assy.	48	27067	Self-Tapping Screw (2 Req. f/G.S.)
6	26537	Centering Head	30	27062	Motor Bracket	50	59722	Front Side Plate
7	26542	Back Plate	31	26832	V-Belt	51	26852	Gear Box Pulley
8	26477	Top Cover	32	40770	Lock Washer 5/16" (4)	53	26507	Pinch Point Cover Boss (2 Req. f/G.S.)
	46867	Die Head Decal (Not Shown)	33	27517	Lock Nut 5/16" - 18	54	27007	Inlet Hose
9	40910	Screw 1/4" - 20 x 3/4" (6)	34	47080	Grommet	55	26822	Output Hose
10	45300	Set Screw 5/16" - 24 x 1/4" (3)	35	33617	Spacer	56	27002	Key
11	45265	Set Screw 5/16" - 24 x 1/2" (3)	36	85910	Bolt 5/16" - 18 x 1 1/4"	58	85920	Rivets (8)
12	32407	Scroll	37	26857	Motor Pulley (60 Hz)	59	26332	Chuck Cap
13	26352	Rear Bearing		27082	Motor Pulley (50 Hz)	60	88690	Safety Plate
14	26307	Washer	38	26347	Drive Gear/Spindle Assy.	61	26522	Screw 5/16" - 24 x 2 1/4" (6)
15	26487	Rear Side Plate	39	26482	Bottom Cover	62	27242	Screw 10 - 32 (6)
16	32145	Screw 1/4" - 20 x 1/2"	40	26337	Handwheel	63	33612	Set of 3 Cover Plates
17	46860	Grease Fitting (2)	41	26237	Motor w/Capacitor 120V, 60 Hz	64	83545	Jam Nut 3/8" - 16
18	26997	Screw 3/8" - 16 x 3/4" (8)		27287	Motor w/Capacitor 110V, 50 Hz	65	35117	Tube Insert (3)
19	44740	Lock Washer 1/4"		26232	Motor w/Capacitor 240V, 60 Hz	66	40602	Compression Nut
20	96740	Washer 5/16"		27282	Motor w/Capacitor 220/240V, 50 Hz	67	40607	Ferrule
21	26357	Base	42	27037	Shoulder Bolt	68	26972	Union
22	26492	Belt Tensioner	43	27012	Pinion Guard	69	43552	Tie Down Strap
23	96730	Nut 5/16" - 18 (4)	44	26517	Scroll	70	45275	Screw 10 - 24 x 1/2"
24	27402	Washer 5/16" (4)	45†	27307	Oil Pump	71	27032	Shifter Knob